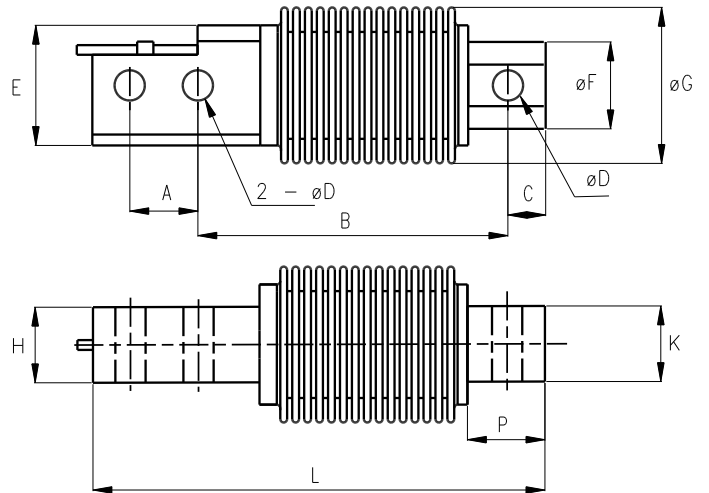




# LCBB bending beam load cell

Product Information



## Specifications in mm and kg

Capacity	Order	A	B	C	D	E	F	G	H	K	L	P	Weight
5kg	LBB0005S000XXX	18	82	10	8.2	31.75	23	39	20	20	120	21.2	0.9
10kg	LBB0010S000XXX	18	82	10	8.2	31.75	23	39	20	20	120	21.2	0.9
20kg	LBB0020S000XXX	18	82	10	8.2	31.75	23	39	20	20	120	21.2	0.9
30kg	LBB0030S000XXX	18	82	10	8.2	31.75	23	39	20	20	120	21.2	0.9
50kg	LBB0050S000XXX	18	82	10	8.2	31.75	23	39	20	20	120	21.2	0.9
100kg	LBB0100S000XXX	18	82	10	8.2	31.75	23	39	20	20	120	21.2	0.9
200kg	LBB0200S000XXX	18	82	10	8.2	31.75	23	39	20	20	120	21.2	0.9
350kg	LBB0350S000XXX	18	82	10	10.3	31.75	24	39	20	19	120	21.2	0.9
500kg	LBB0500S000XXX	18	82	10	10.3	31.75	24	39	20	19	120	21.2	0.9

Signal Output at Capacity.....2±1% mV/V  
 Linearity Error.....< 0.017% (0.05%\*)FSO  
 Non-Repeatability.....< 0.010% FSO  
 Combined Error.....< 0.020% (0.05%\*)FSO  
 Creep/(30 mins.).....< 0.020% (0.07%\*)FSO  
 Zero Balance.....< 1 % Capacity  
 Temperature Effect on Span(/10C).....< 0.014% (0.05%\*)FSO  
 Temperature Effect on Zero(/10C).....< 0.017% (0.07%\*)FSO  
 Operating Temperature Range.....-35 ~ +65 C  
 Storage Temperature Range.....-50 ~ +85 C  
 Compensated Temperature Range.....-10 ~ +40 C  
 NOTE: Specifications marked (\*) apply to the 5kg and 10kg capacities

Service Load.....100% Capacity  
 Safe Load.....150% Capacity  
 Ultimate Load.....300% Capacity  
 Input Resistance.....445Ω ± 65Ω  
 Output Resistance.....350Ω ± 3.5Ω  
 Insulation Resistance.....> 5000 MΩ (@50 VDC)  
 Excitation Voltage(Rec).....5~12 V AC/DC  
 Excitation Voltage(Max.).....18 V DC  
 Cable.....3m Dia. 5.0 mm  
 Material.....17-4PH Stainless Steel  
 Protection.....IP68

Excitation +ve.....GREEN  
 Signal +ve.....WHITE

Excitation -ve.....BLACK  
 Signal -ve.....RED